

COMPETENCES & REFERENCES 2025

New Era of Intelligence



Content

- 03 A New Era of Intelligence
- 10 Nemetschek Group customer projects
- 31 Picture credits



A New Era of Intelligence

The AEC/O industry is entering a new phase where artificial intelligence (AI) combines knowledge, experience, and creativity. In this new *Era of Intelligence*, the focus is not on technology for its own sake, but rather on how intelligent tools can tangibly improve the everyday work for planners, builders, operators, and creatives.

Intelligence that creates value

Extending software with AI functions enables more informed and precise decisions, allowing for the automation of repetitive and time-consuming tasks. By optimizing these processes, more space is made available for creativity, innovation, and sustainable development. In this way, AI becomes an instrument of real value creation and a driver of responsible progress for people, the environment, and the economy.

Nemetschek as a trailblazer

As a leading vertical software and AI provider for the construction and media industries, the Nemetschek Group combines deep domain expertise, long-standing customer relationships, and access to high-quality, industry-specific data while remaining deeply embedded in its customers' workflows. On this basis, we develop AI that is not generic but rather precisely tailored to the requirements of all stakeholders along the entire building life cycle – from the first idea to the operation of buildings and infrastructure.

Shaping the Era of Intelligence

Artificial intelligence is fundamentally transforming the AEC/O industry – from the first sketch through planning and execution to the operation of buildings. It aids in managing complexity, using resources more effectively, and making decisions based on a robust data foundation. At the same time, it strengthens human creativity, facilitates collaboration, and creates space for sustainable decisions.

AI as an integral component

Innovation is part of the Nemetschek Group's DNA. For us, our own product development is the most important lever. We have been systematically investing in AI technologies for many years and have recently increased these investments significantly. Concrete initiatives range from AI-supported workflows embedded directly in our solutions – including analytics, visualization, and assistance functions – to new agent-based systems that support users in planning, execution, and decision-making.

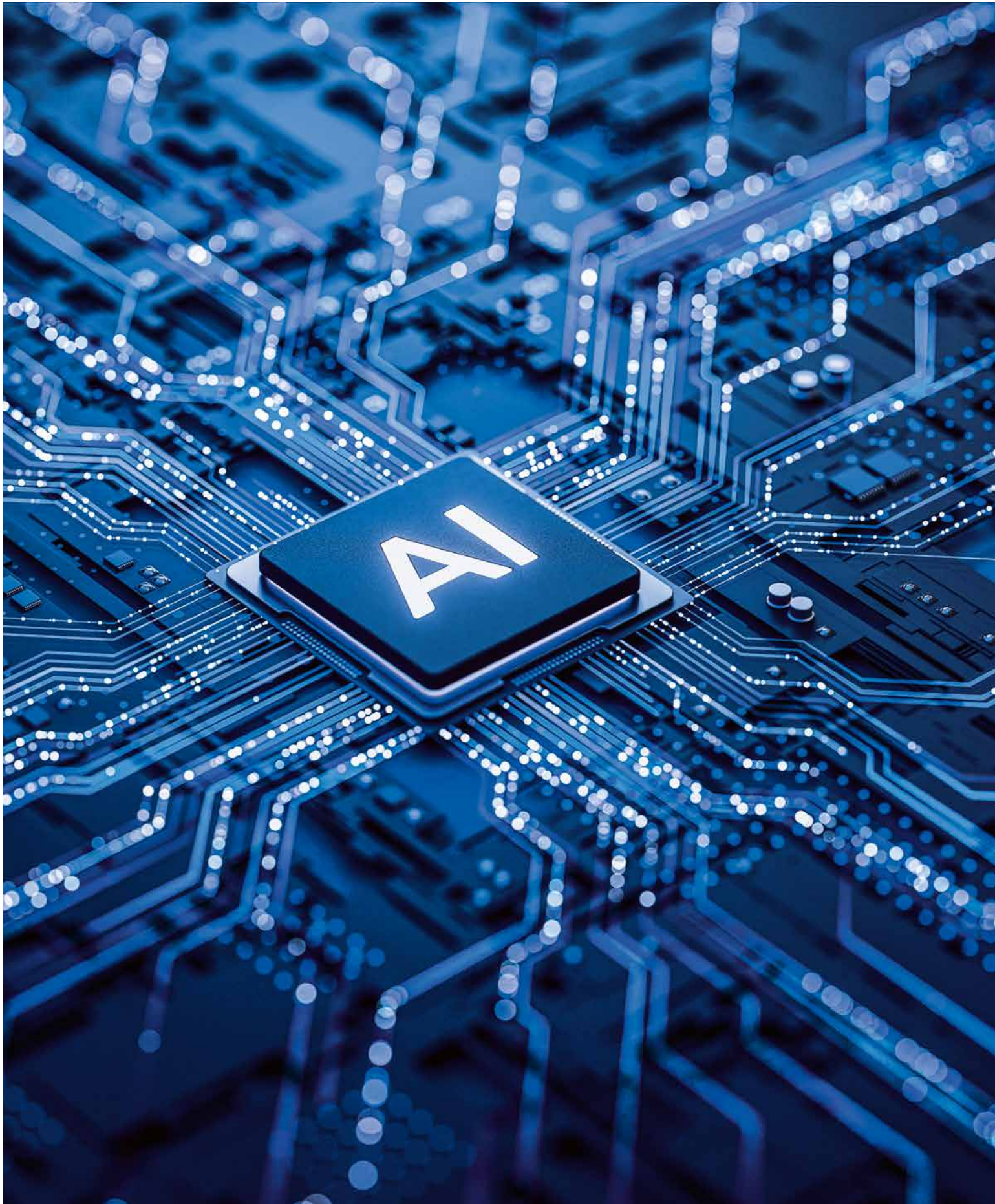
AI will not replace our software, but will purposefully extend it. Our customers are not asking for “less software, more AI”, but for solutions that make their daily work more efficient, safer, and more productive. That is why we utilize AI as an integral part of our vertical software solutions. It automates recurring tasks, improves decision quality, and makes complex projects more manageable.

Examples include generative design engines in architecture tools that enable faster and better creation of rule- and standards-compliant designs, as well as automated support in reviewing room and building plans that detects conflicts at an early stage. In this way, intelligence is created and is directly noticeable in our customers' everyday work.

Vertical solutions

When it comes to business-critical workflows, regulation compliance, industry expertise, and reliable results are crucially in demand. Our vertical solutions address these requirements and provide the foundation on which AI assistants and agent-based systems can act responsibly. AI thus becomes a co-pilot for experts – with humans remaining at the center.

In this way, we are actively shaping the *Era of Intelligence*. As a global provider, we develop solutions that integrate intelligence into everyday work in meaningful ways, thereby continuing to extend human capabilities while driving productivity gains for better results.





Intelligent Market Strategy

In a time of rapid change, true intelligence is evident not only in technologies but also in strategic foresight.

Intelligent market strategy – shaping with foresight

The Nemetschek Group pursues an AI strategy that combines product development and data competence with deep market understanding and an ethical, trustworthy approach. A central element is our group-wide AI & Data Innovation Hub. This hub bundles technological competencies, promotes cross-brand synergies, and ensures that AI developments are implemented in a scalable and consistent way that can be reused effectively across brands in different segments. This enables powerful features to be made available in many solutions more quickly.

In addition to internal development, the Nemetschek Group uses targeted acquisitions and venture investments to further expand its AI capabilities and accelerate access to new technologies, talent, and use cases.

- » Technology-driven acquisitions complement the existing portfolio with specialized AI expertise that enable the rapid integration of new approaches into our products.

- » Venture investments make it possible to support technological developments at an early stage and provide impetus for the sustainable further development of the entire AEC/O industry.

Our AI-based insights help steer innovation in a targeted manner, from product development to business strategy. This creates solutions that streamline processes, conserve resources, and give our customers a sustainable competitive advantage.

Elevating software performance with AI

The AI & Data Innovation Hub leverages the strength of our global ecosystem: millions of users worldwide, tightly integrated solutions at key digital touchpoints, and access to real project and process data. By embedding AI functions into existing workflows across the entire customer base, we generate high-quality, domain-specific data that continuously improves our models and assistance systems. This creates a cycle in which increased usage leads to better results.

In this way, the *Era of Intelligence* emerges, with AI elevating software performance and enabling greater productivity, quality, and sustainability both in the built and digital world.

Intelligent Growth

Preserving values, shaping the future.

Today, growth means far more than size or market share. Intelligent growth takes place where innovation meets responsibility and technology creates real added value. The Nemetschek Group pursues a strategy of sustainable, value-oriented growth, with the aim of actively shaping the future of the construction industry while fostering the growth of our customers at the same time.

Artificial intelligence plays a central role in this. It helps to optimize processes, identify potential at an early stage, and enable data-driven decisions more accurately. Our AI solutions support stakeholders across the entire building life cycle, helping them work more efficiently, reduce risks, and implement ideas more quickly while strengthening competitiveness and creating new opportunities for economic success.

From tool-centered to agent-based

In parallel, Nemetschek is reimagining the user experience, transitioning from individual tools to intelligent and agent-based workflows. AI-driven agents increasingly take over operational, repetitive, and time-consuming tasks. This aids in orchestrating processes across different applications, providing context-specific support in planning and analysis. The goal is to reduce complexity, accelerate projects, and improve result quality – with humans maintaining full control.

Responsibility and trust – ethics as a foundation

For us, responsibility and ethics are inseparably linked to innovation. In AEC/O workflows where safety and liability are factors, decisions can have significant economic and legal consequences; trust is therefore a central prerequisite for the acceptance of new technologies.

The Nemetschek Group is committed to a deliberate and transparent approach to artificial intelligence. Our solutions are designed to be explainable, reliable, and seamlessly integrable into existing processes. AI is intended to support professionals, not replace them.

In doing so, we address issues such as data protection, information security, on-site safety, and the handling of intellectual property. Our principles include transparency, data privacy, robustness, accountability, and sustainability. They form the framework for all AI developments, from the first idea to deployment at the customer.

Building the future together

The growth of the Nemetschek Group is based on a partnership mindset. We invest specifically in research, innovation, and education to leverage the opportunities of AI responsibly and for the benefit of the entire AEC/O industry.

Nemetschek Group's AI strategy is complemented by close partnerships with renowned academic institutions. These include the TUM Georg Nemetschek Institute – Artificial Intelligence for the Built World at the Technical University of Munich, Stanford University in the U.S., and Nanyang Technological University in Singapore. These collaborations promote knowledge transfer between research and practice to translate technological developments into market-ready solutions at an early stage and continue shaping international standards.

Nemetschek also uses AI internally in software development, testing, customer service, and administrative functions. The goal is to shorten development and response times, automate processes, and reduce repetitive work for employees. This opens up more room for innovation and customer-oriented value creation.

In the end, this leads to a new understanding of artificial intelligence as a connector between people and operations. Solutions become not only technically convincing but also continue to measurably improve the everyday lives of many people in the built environment. In the *Era of Intelligence*, the Nemetschek Group stands alongside its customers, providing a clear strategy, reliable partnerships, and a commitment to shaping progress responsibly.



New Era of

Planning & Design





AI-based solutions create new scope for visionary thinking, precise planning and sustainable design – where creativity and technology meet.

Cantonal road K2b, Vitznau, Switzerland;
Engineering office and image: Bänziger Partner AG;
realized with software solutions from Alplan



THE PROJECT

Pier 27

Toronto, Canada

Four linear buildings, arranged in pairs on a north-south axis, provide a view of the Lake Ontario and the lakeside promenade. They are each connected by a three-story, cantilevered bridge, reminiscent of the cranes used to load and unload cargo ships in Toronto harbor. Commercial space for retail on the first floor rounds off the complex.



PRODUCT:

ARCHICAD

WEBSITE: www.graphisoft.com



VECTORWORKS

PRODUCT:

Vectorworks Architect

WEBSITE: www.vectorworks.net

THE PROJECT

Farm-to-Wall Residence

Douglas County, Nevada, USA

Renewable building material: Straw bales with clay cladding were transformed into a high-performance, low-carbon residential building that blends harmoniously into the surrounding landscape. A sheltered courtyard with a pond – fed by condensation from the metal roofs – helps to cool the building in summer. Photovoltaic modules on the roof generate electricity and supply hot water. Ecological design and good architecture are not mutually exclusive, but rather combine to become one.

SOLIBRI

PRODUCT:

Solibri

WEBSITE: www.solibri.com

THE PROJECT

Port Messe

Nagoya, Japan

Designed to mark the 50th anniversary of Port Messe Nagoya, the exhibition hall is a landmark of the Japanese city. Located in the port of Nagoya, it offers modern infrastructure for international trade fairs and exhibitions. The 20,000 m², column-free exhibition space Visually stands out with its wave-shaped roof and dynamic glass façade, inspired by its proximity to the sea and the surrounding bay.



THE PROJECT

Cantonal road K2b

Vitznau, Switzerland

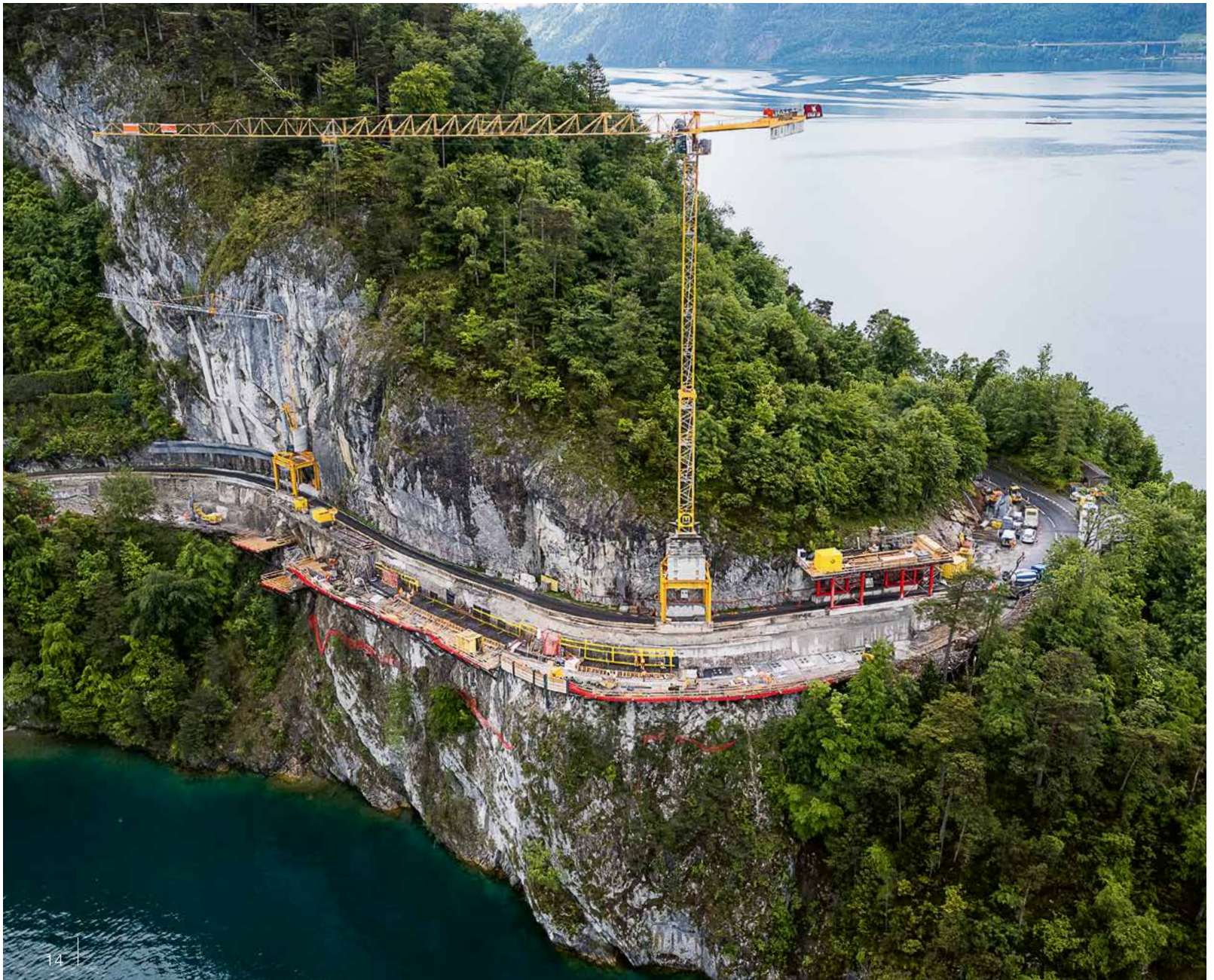
The road meanders elegantly along the rocky shore of Lake Lucerne. Built in 1885 and extended in 1939, it no longer met today's requirements. It was extended and renovated at a cost of around EUR 23 million, with an elaborate leaning structure and retaining walls to ensure that the new carriageway is at least 7 meters wide and provides a convenient connection to the national road network.

ALLPLAN

PRODUCT:

Allplan

WEBSITE: www.allplan.com





THE PROJECT

Ochsner Neuroscience Center

New Orleans, USA

The new 132,000 m² Institute of Neuroscience will house more than 20 existing neurology and psychology clinics. The large freestanding building will provide specialized care for patients with stroke, epilepsy, Parkinson's, MS, or other neurological disorders as well as those recovering from neurosurgery or strokes. The demolition of a warehouse will make room for the expansion of the open spaces and a parking garage, completing the project on the Ochsner Health campus.



PRODUCT:

RISA-3D

WEBSITE: www.risa.com





New Era of

Build & Construct

AI brings intelligence directly to the construction site. The result is networked processes, efficient workflows, the targeted use of resources and safe construction projects.

Power Plant, USA;
Engineering office: IHI Energy Solutions;
realized with software solutions from Bluebeam



PRODUCT:

Revu

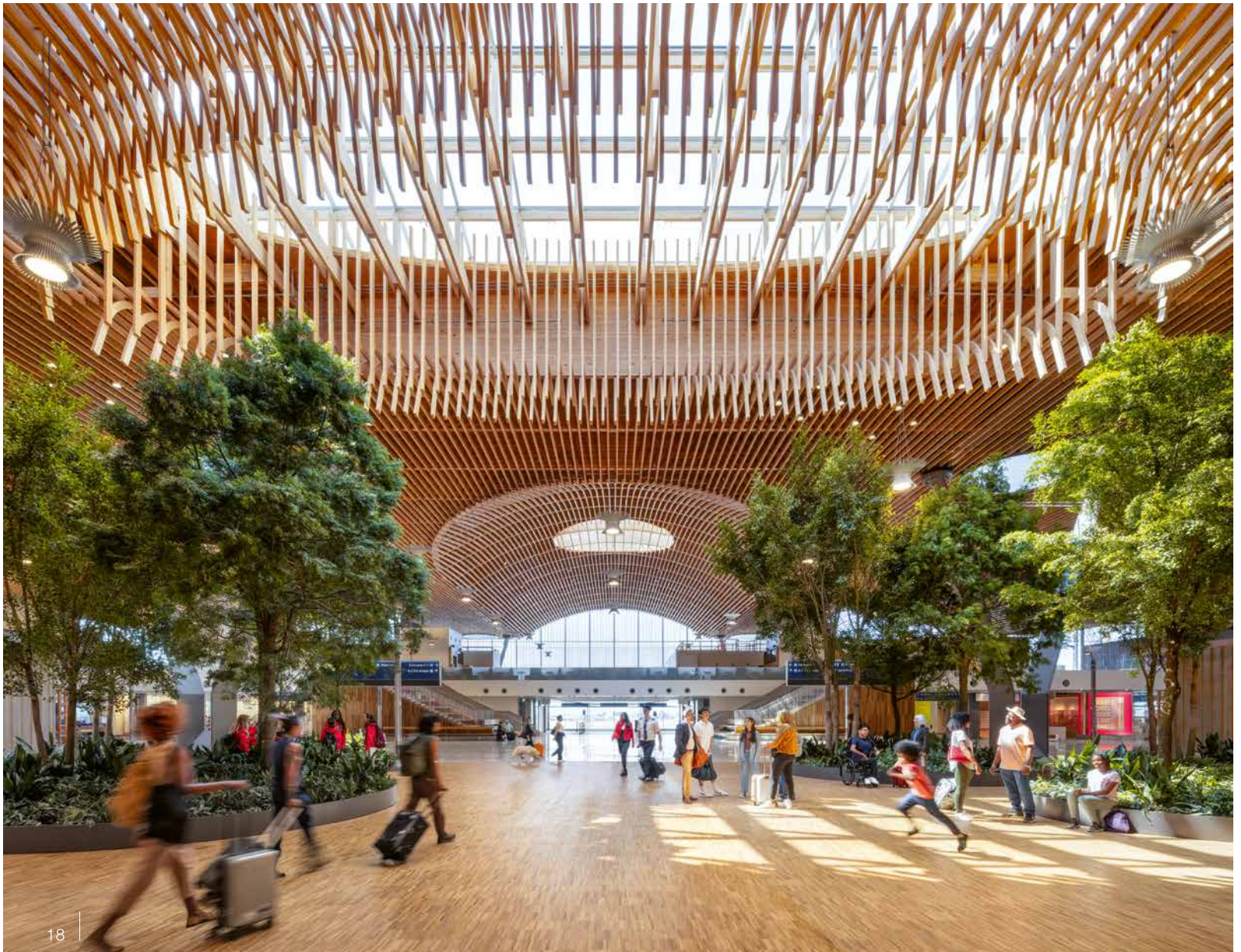
WEBSITE: www.bluebeam.com

THE PROJECT

Portland Airport

Portland, Oregon, USA

The nine-hectare wooden roof looms over the travelers, forming a space in the main terminal that is both airy and warm. Almost twice the size of the old lobby, it now spans a space that used to consist only of a patchwork of individual buildings. To avoid closure, huge segments were pre-fabricated that can withstand a magnitude nine earthquake. As a result, the airport will have the capacity to handle an annual volume of 35 million passengers by 2045.





gocanvas

PRODUCT:

SITEDOCS

WEBSITE: www.GoCanvas.com, www.SiteDocs.com

THE PROJECT

Power line

Nationwide, USA

Utility infrastructure is the backbone of a country. Maintaining and repairing critical power and utility networks that communities depend on every day, often under time pressure and adverse conditions, is essential. Fast response times, safe teams, and efficient processes when it matters most are crucial.

NEVARIS

PRODUCT:

123ERFASST

WEBSITE: www.nevaris.com

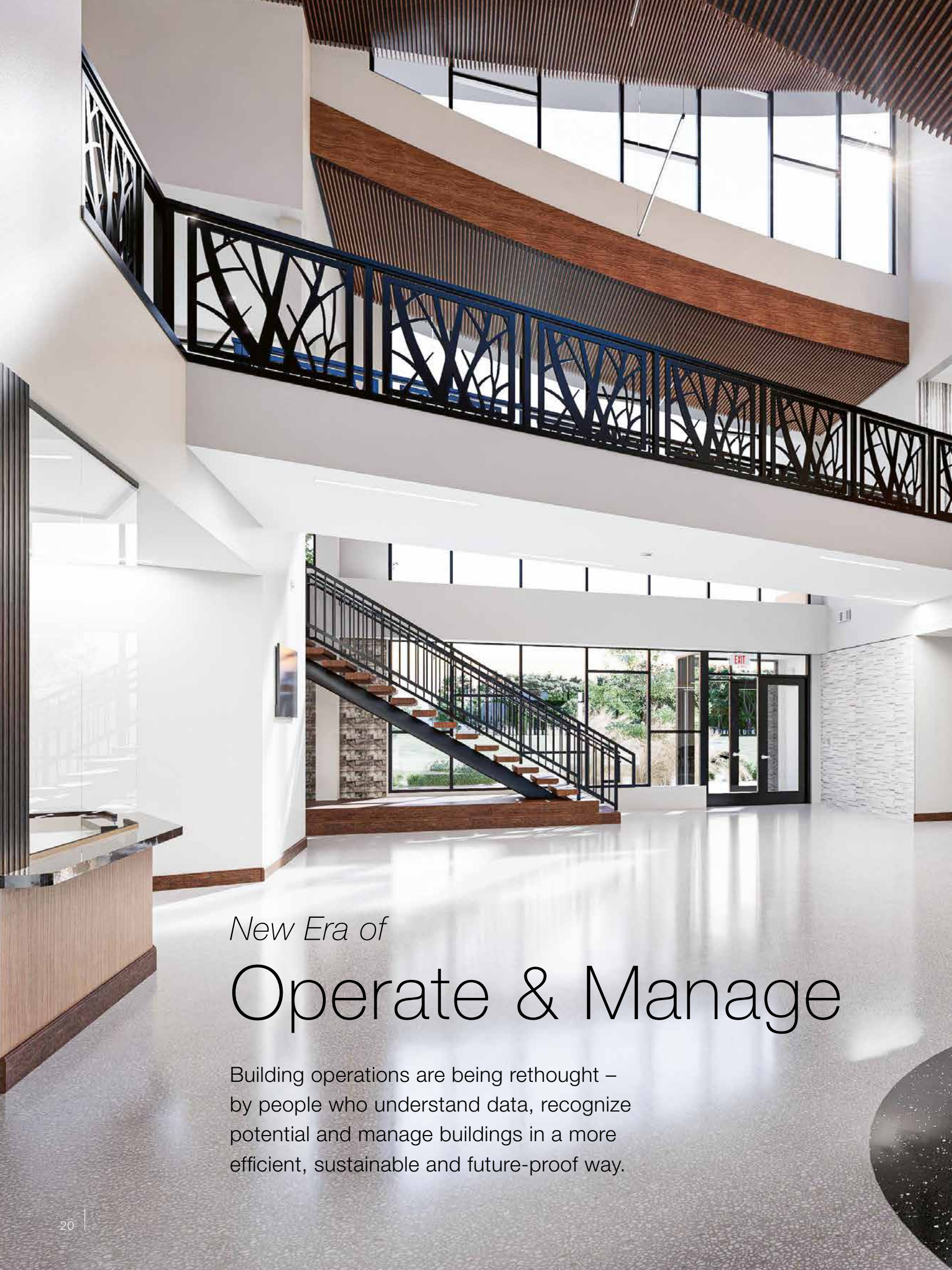
THE PROJECT

Sparkling Wine Pavilion

Freyburg, Germany

In the heart of Freyburg's traditional landscape, Rotkäppchen-Mumm sparkling wine cellars GmbH combines craftsmanship with a culture of enjoyment. It has recently been given a sophisticated technical and design update. A total of 1,250 m² of paving and 1,800 m³ of earthworks with carefully landscaped green areas were installed around the sparkling wine pavilion. Precision and quality awareness created a foundation that perfectly rounds off the stylish atmosphere of this traditional house.





New Era of

Operate & Manage

Building operations are being rethought – by people who understand data, recognize potential and manage buildings in a more efficient, sustainable and future-proof way.



Hannahville Potawatomi Ind

Hannahville Health Center, Wilson, Michigan, USA;
Architects and Image: I & S Group, Inc.;
realized with software solutions from Risa

THE PROJECT

Holzhafen West

Hamburg, Germany

Working with a view of the Elbe: Architecturally inspired by Hamburg's Speicherstadt warehouse district, these modern offices offer a modern space concept over 14,300 m². The buildings are grouped into three wings surrounding large terraces that open out onto the water, providing plenty of light at the workstations as well as a spectacular view of the harbor.

CREMSOLUTIONS

PRODUCTS:

Workplace Management, Workplace Experience & Workplace Analytics

WEBSITE: www.crem-solutions.de





THE PROJECT

Rabobank Headquarters

Utrecht, The Netherlands

Rabobank is an international cooperative bank with Dutch roots. It uses Spacewell software for all its facility and real estate processes. In addition, Rabobank is implementing Workplace Data Analytics with the support of occupancy and utilization sensors. This data is used to facilitate the fit-out of a new building.



SPACEWELL

PRODUCTS:

Workplace Analytics

WEBSITE: www.spacewell.com

Vienna Airport, Schwechat, Austria;
Building management and image: Flughafen Wien AG;
realized with software solutions from dTwin

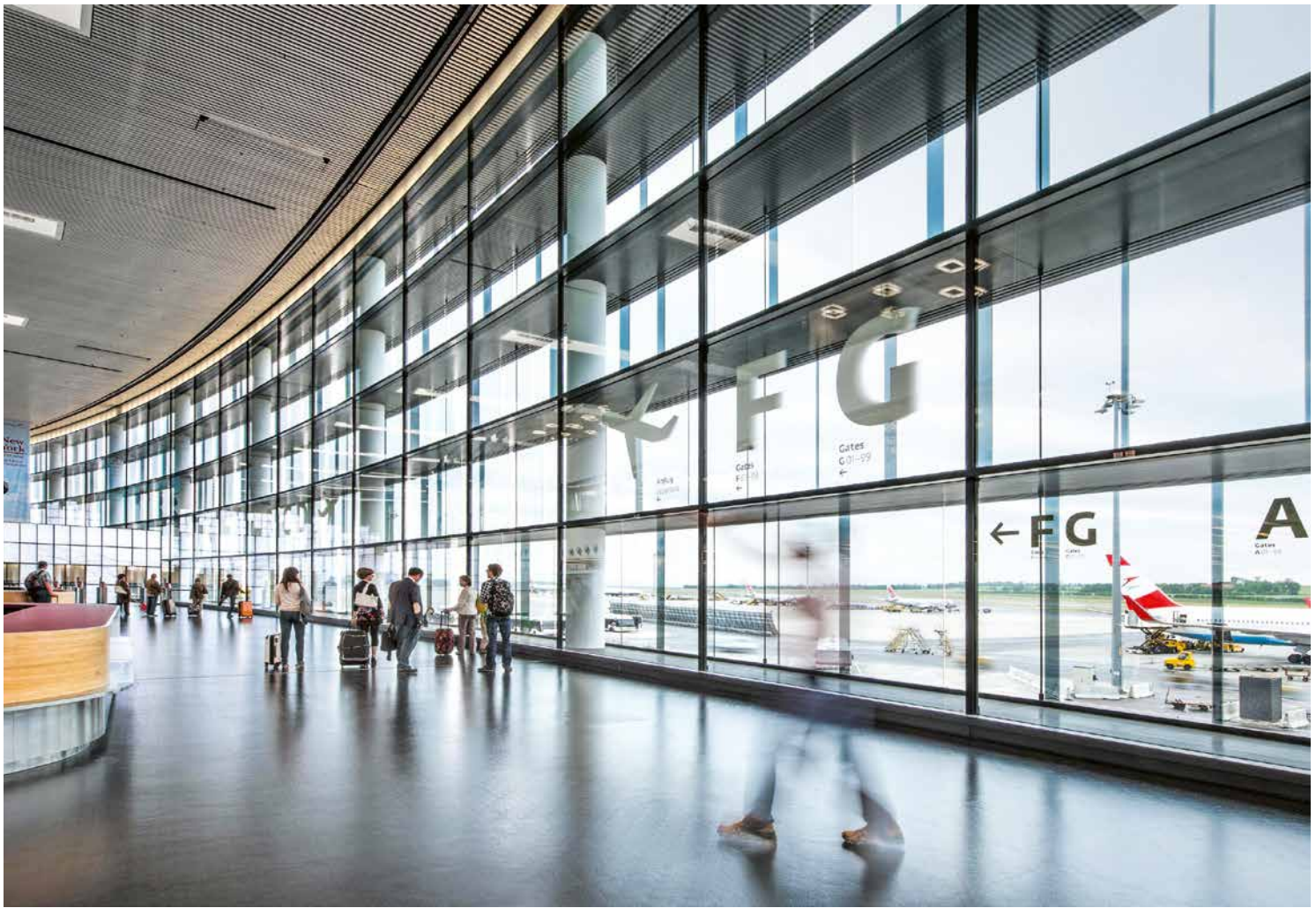


New Era of

Digital Twin

Digital twins connect physical and virtual worlds by mapping buildings in real time – even more precisely and effectively thanks to the use of artificial intelligence.





THE PROJECT

Vienna Airport

Schwechat, Austria

Record-breaking: Austria's largest airport welcomed its 32 millionth passenger in 2025, setting a new record. It has established itself as an important international hub for travel to Eastern Europe and Asia. In 2027, the planned southern expansion of Terminal 3 will create a special airport experience over 70,000 m², forging a close visual link to Vienna's historical heritage.

dTwinTM

PRODUCTS:

dRofus dTwin

WEBSITE: www.drofus.com/en/dtwin

THE PROJECT

Viking Ship Museum

Oslo, Norway

The Viking Ship Museum in Oslo is one of Norway's most ambitious cultural projects. The museum, which will reopen in 2027 after a major expansion, exhibits nearly 5,500 artifacts. And these are not just any artifacts; they include the world's best-preserved Viking ships, the "Oseberg" and "Gokstad", dating from the ninth century. The old museum was designed for only 40,000 visitors per year, but interest proved to be significantly greater: Up to half a million people visited the site annually.



PRODUCT:

dRofus

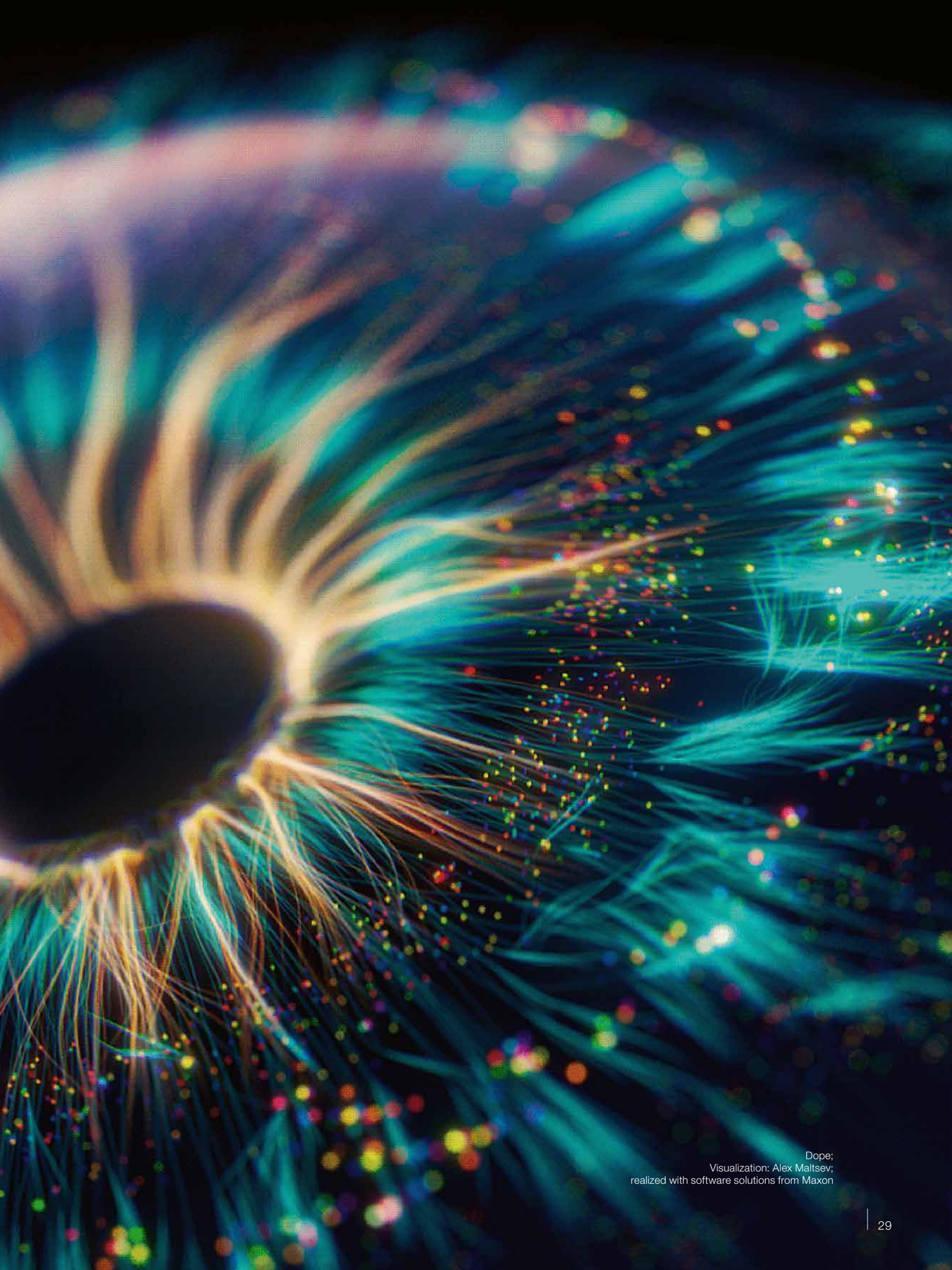
WEBSITE: www.drofus.com



New Era of

Media & Entertainment

AI-based software solutions enable new forms of storytelling and visualization, accelerate workflows and combine creativity with state-of-the-art technology – with impressive results.



Dope;
Visualization: Alex Maltsev;
realized with software solutions from Maxon



THE PROJECT

The Division Bell

Visualization

“The Division Bell” is a tribute to the iconic album cover of Pink Floyd’s 14th studio album. It deals with the theme of communication, promoting the idea that conversations can solve many problems. Just as Nefertiti’s head is timelessly beautiful, communication between people is timelessly important.



PRODUCT:

Maxon Cinema 4D

WEBSITE: www.maxon.net

Picture credits

Cover + inside: Airship hangar, Mülheim, Germany;
Engineering office: Ripkens Wiesenkämper; Images: Stefan Lamberty

Pages 5, 6 and 9: Shutterstock, Adobe Stock

Pages 10/11 and 14: Cantonal road K2b, Vitznau, Switzerland;
Engineering office and Images: Bänziger Partner AG

Page 12: Pier 27, Toronto, Canada; Architects and Visualization:
architects—Alliance, architectsalliance.com

Page 13: Port Messe, Nagoya, Japan; General contractor:
Takenaka Corporation; Image: Mitsunori Aiba | Farm-to-Wall, Douglas
County, Nevada, USA; Architects: Arkin Tilt; Image: Edward Caldwell

Page 15: Ochsner Neuroscience Center, New Orleans, USA;
General contractor and Image: Woodward Design+Build, LLC

Pages 16/17: Power Plant, USA; Engineering office:
IHI Energy Solutions

Page 18: Portland Airport, Oregon, USA; Architects: ZGF Architects;
Image: Ema Peter Photography

Page 19: Utility Lines, USA; Utility Infrastructure Construction: Utility
Lines Construction Services (ULCS) | Sparkling Wine Pavilion, Freyburg,
Germany; Construction company and Image: MST Laucha

Pages 20/21: Hannahville Health Center, Wilson, Michigan, USA;
Architects and Image: I & S Group, Inc.

Page 22: Holzhafen West, Hamburg, Germany;
Building management: B&L Gruppe; Image: Marco Moog

Page 23: Rabobank Headquarters, Utrecht, The Netherlands;
Building management and Image: Rabobank

Pages 24 to 26: Vienna Airport, Schwechat, Austria; Building
management and Images: Vienna Airport

Page 27: Viking Ship Museum, Oslo, Norway; Building management and
Visualization: University of Oslo

Pages 28/29: Dope; Visualization: Alex Maltsev

Page 30: The Division Bell; Visualization: Rudi Silbermann

NOTE: This supplement is an editorial article about the Nemetschek Group,
published as a non-tested element together with the Annual Report 2025.

NEMETSCHEK
GROUP

NEMETSCHEK SE
Konrad-Zuse-Platz 1
81829 Munich
Tel.: +49 89 540459-0
Fax: +49 89 540459-414
investorrelations@nemetschek.com
www.nemetschek.com

